



30x36 8' & 12' As pictured \$8,015.00



www.randbmetalstructures.com

American Owned and Operated!



10x8 Roll-up and 34" Walk-thru

44x26 6' & 10' As pictured \$7,325.00

CUSTOM SIZES/COLORS AVAILABLE

THERE MAY BE A 20% RESTOCKING FEE ON CHANGES MADE AFTER 72 HRS. OF ORDER.



ON YOUR LEVEL LAND



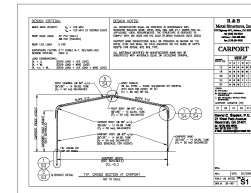
Barn Style

CALL YOUR DEALER

TEL.

38' X 21' Barn
\$2565
Standard 6' & 10' Legs

- Prices are for top only.
- Subtract 15% off base price for only 1 lean-to
- Note: Frame 1FT. Shorter than roof length.
- Lean-tos standard 10' wide, look on back for 12' pricing.



Certified drawings available



	10-12-10		10-18-10		10-20-10		10-22-10		10-24-10	
14 Gauge	32X21	\$2,465	38X21	\$2,565	40X21	\$2,665	42X21	\$2,865	44X21	\$3,065
	32X26	\$2,920	38X26	\$3,020	40X26	\$3,220	42X26	\$3,420	44X26	\$3,800
	32X31	\$3,400	38X31	\$3,500	40X31	\$3,800	42X31	\$4,200	44X31	\$4,300
	32X36	\$4,135	38X36	\$4,235	40X36	\$4,635	42X36	\$4,835	44X36	\$5,150
	32X41	\$5,320	38X41	\$5,420	40X41	\$5,720	42X41	\$5,920	44X41	\$6,220
12 Gauge	32X21	\$2,765	38X21	\$2,965	40X21	\$2,990	42X21	\$3,215	44X21	\$3,465
	32X26	\$3,270	38X26	\$3,370	40X26	\$3,595	42X26	\$3,820	44X26	\$4,250
	32X31	\$3,800	38X31	\$3,900	40X31	\$4,225	42X31	\$4,650	44X31	\$4,800
	32X36	\$4,585	38X36	\$4,685	40X36	\$5,110	42X36	\$5,335	44X36	\$5,700
	32X41	\$5,720	38X41	\$5,820	40X41	\$6,245	42X41	\$6,470	44X41	\$6,820

WE ACCEPT





OPTION LIST

	21' Long	26' Long	31' Long	36' Long	41' Long
Vertical Roof	\$800	\$1,000	\$1,200	\$1,400	\$1,600
Vertical Sides/Ends	\$1,000	\$1,150	\$1,300	\$1,450	\$1,600
12' Lean-To's	\$400	\$450	\$500	\$550	\$600

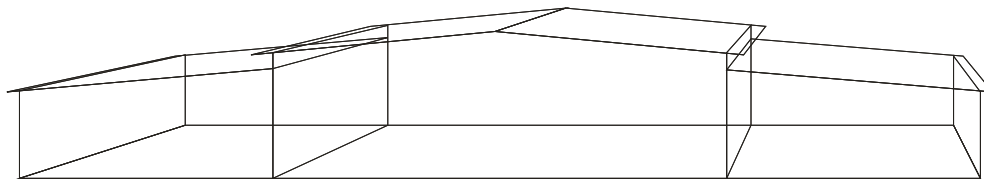
	LEG HEIGHT	21' Long	26' Long	31' Long	36' Long	41' Long
Raise Legs	6 & 10 foot	Standard	Standard	Standard	Standard	Standard
	8 & 12 Foot	\$415	\$475	\$505	\$615	\$675

Close Both Sides	LEG HEIGHT	21' Long	26' Long	31' Long	36' Long	41' Long
	6 feet	\$350	\$425	\$465	\$575	\$650
	8 feet	\$425	\$515	\$600	\$700	\$800
	10 feet	\$525	\$625	\$675	\$825	\$945
	12 feet	\$725	\$825	\$875	\$1,150	\$1,250
	Extra side panel	\$90	\$115	\$125	\$145	\$165

Close Both Ends	LEG HEIGHT	10' Lean-to	12' Lean-to			
	6 feet	\$800	\$850	<i>per lean-to</i>		
	8 feet	\$900	\$950	<i>per lean-to</i>		
	LEG HEIGHT	12' Wide	18' Wide	20' Wide	22' Wide	24' Wide
	10 feet	\$1,150	\$1,350	\$1,500	\$1,700	\$1,900
	12 feet	\$1,350	\$1,600	\$1,800	\$2,000	\$2,250

Extras	Windows	Walk-In Door	Gable End	Garage Doors		
	24" x 36" \$100	34" x 80" \$200	\$175 <i>All Sizes</i>	5x7 \$275	8x8 \$325	
	Braces	Anchor to Concrete \$50	Anchors Mobile Home Anchors \$25 Each	9x8 \$350	10x8 \$375	
	Corner 30" \$10 Each	Garage door on side Add \$150 per door		10x10 \$425	Extra Bow \$100 with 6' legs (Add \$10 for each additional foot in height)	
Roof 48" \$20 Each	Connect units end to end \$100					

Larger Doors are available, Call for quote



We recommend braces for 8' and taller legs

Dutch Opening \$25 per opening

Larger Garage Doors available, Call for a quote.

TO CLOSE ONE SIDE OR ONE END, SIMPLY DIVIDE THE PRICE IN 1/2.