

**CUSTOM
SIZES/COLORS
AVAILABLE**

18x41x11' As Pictured \$3,675.00



6 Corner Braces



www.randbmetalstructures.com

DELUXE

2"x3" Galvanized Tubing

THE STRONGEST DELUXE STRUCTURE

American Owned and Operated!



30x26x9' As Pictured \$8,905.00

**40' X 41'
INDUSTRIAL
\$6,660.00**

**Standard
14 Gauge, 7' Legs**



40x51x10' As Pictured \$9,610.00

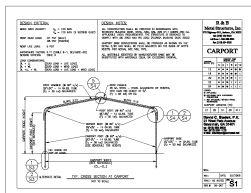
**30' X 21'
TRIPLE CARPORT
\$2,620.00**

**Welded Corner
14 Gauge, 7' Legs**

- Prices are for top only.
- Welded corners and Vertical roofs available up to 30' wide
- Note: Frame 1FT. Shorter than roof length.

UP TO 301' LONG

**Certified
drawings
available**



12X21	\$1,495	18X21	\$1,595	20X21	\$1,795	22X21	\$1,850	24X21	\$2,015
12X26	\$1,635	18X26	\$1,985	20X26	\$2,180	22X26	\$2,290	24X26	\$2,495
12X31	\$1,955	18X31	\$2,375	20X31	\$2,480	22X31	\$2,730	24X31	\$2,975
12X36	\$2,265	18X36	\$2,755	20X36	\$2,880	22X36	\$3,170	24X36	\$3,455
12X41	\$2,585	18X41	\$3,135	20X41	\$3,280	22X41	\$3,610	24X41	\$3,935
26X21	\$2,085	28X21	\$2,255	30X21	\$2,620	36X21	\$3,125	40X21	\$3,460
26X26	\$2,600	28X26	\$2,815	30X26	\$3,020	36X26	\$3,845	40X26	\$4,260
26X31	\$3,125	28X31	\$3,375	30X31	\$3,625	36X31	\$4,565	40X31	\$5,065
26X36	\$3,645	28X36	\$3,930	30X36	\$4,220	36X36	\$5,285	40X36	\$5,860
26X41	\$4,165	28X41	\$4,495	30X41	\$4,820	36X41	\$6,005	40X41	\$6,660

CALL YOUR DEALER

TEL.

WE ACCEPT



F107808A

THERE MAY BE A 20% RESTOCKING FEE ON CHANGES MADE AFTER 72 HRS. OF ORDER.



OPTION LIST

UP TO 30' WIDE					
Welded Corner	\$100	\$150	\$200	\$250	\$300
Vertical Roof	\$400	\$500	\$600	\$700	\$800
Vertical Sides/Ends	\$500	\$575	\$650	\$725	\$800

TO CLOSE ONE SIDE OR ONE END, SIMPLY DIVIDE THE PRICE IN 1/2.

	LEG HEIGHT	21' Long	26' Long	31' Long	36' Long	41' Long
Carpport Heights	7 feet	Standard	Standard	Standard	Standard	Standard
	8 feet	\$125	\$135	\$145	\$185	\$205
	9 feet	\$165	\$195	\$205	\$255	\$285
	10 feet	\$205	\$245	\$255	\$325	\$365
	11 feet	\$270	\$320	\$340	\$400	\$450
	12 feet	\$315	\$365	\$385	\$455	\$495

	LEG HEIGHT	21' Long	26' Long	31' Long	36' Long	41' Long
Close Both Sides	7 feet	\$400	\$485	\$560	\$670	\$770
	8 feet	\$425	\$515	\$600	\$700	\$800
	9 feet	\$450	\$550	\$635	\$750	\$870
	10 feet	\$525	\$625	\$675	\$825	\$945
	11 feet	\$600	\$700	\$750	\$900	\$1,020
	12 feet	\$725	\$825	\$875	\$1,150	\$1,250
	Extra side panel	\$90	\$115	\$125	\$145	\$165

12' -24'	LEG HEIGHT	12' Wide	18' Wide	20' Wide	22' Wide	24' Wide
Close Both Ends	7 feet	\$900	\$1,050	\$1,150	\$1,300	\$1,500
	8 feet	\$950	\$1,100	\$1,200	\$1,400	\$1,550
	9 feet	\$1,000	\$1,200	\$1,250	\$1,450	\$1,650
	10 feet	\$1,150	\$1,350	\$1,500	\$1,700	\$1,900
	11 feet	\$1,250	\$1,500	\$1,750	\$1,900	\$2,100
	12 feet	\$1,350	\$1,600	\$1,800	\$2,000	\$2,250
	Gable	\$175	\$175	\$175	\$175	\$175

26'-40'	LEG HEIGHT	26' Wide	28' Wide	30' Wide	36' Wide	40' Wide
Close Both Ends	7 feet	\$1,550	\$1,650	\$1,775	\$2,100	\$2,345
	8 feet	\$1,750	\$1,900	\$2,000	\$2,400	\$2,675
	9 feet	\$1,950	\$2,100	\$2,265	\$2,700	\$3,000
	10 feet	\$2,150	\$2,350	\$2,500	\$3,000	\$3,320
	11 feet	\$2,400	\$2,575	\$2,750	\$3,330	\$3,650
	12 feet	\$2,600	\$2,800	\$3,000	\$3,600	\$4,015
	Gable	\$225	\$250	\$275	\$325	\$350

Extras	Corner Braces 4ft. = \$15ea. Roof Braces 8ft. = \$30ea. We recommend braces for 8' and taller legs.	Walk-In Door 34"x80" \$200	Garage Doors	5x7	\$275
	Extra Bow \$150 with 7' legs (Add \$15 for each additional foot in height)			8x8	\$300
		Windows		9x8	\$350
				10x8	\$375
Larger Doors are available, Call for a quote		24" x 36" \$100	10x10	\$425	